

# INSTALLATION INSTRUCTIONS

DESCRIPTION: **Windshield Kit**  
 PART NUMBER: **B16-F83J0-V0**  
**2UD-F83J0-V0 (w/headlight cutout)**  
 MODEL: **Kodiak 700, Grizzly 700**



## ⚠ WARNING

**Please read and understand these instructions completely before installation to avoid possible injury, or damage to the accessory or vehicle. Remove Windscreen when trailering or towing.**

## NOTICE:

This installation requires a torque wrench and should be performed by an authorized Yamaha dealer or other qualified technician.

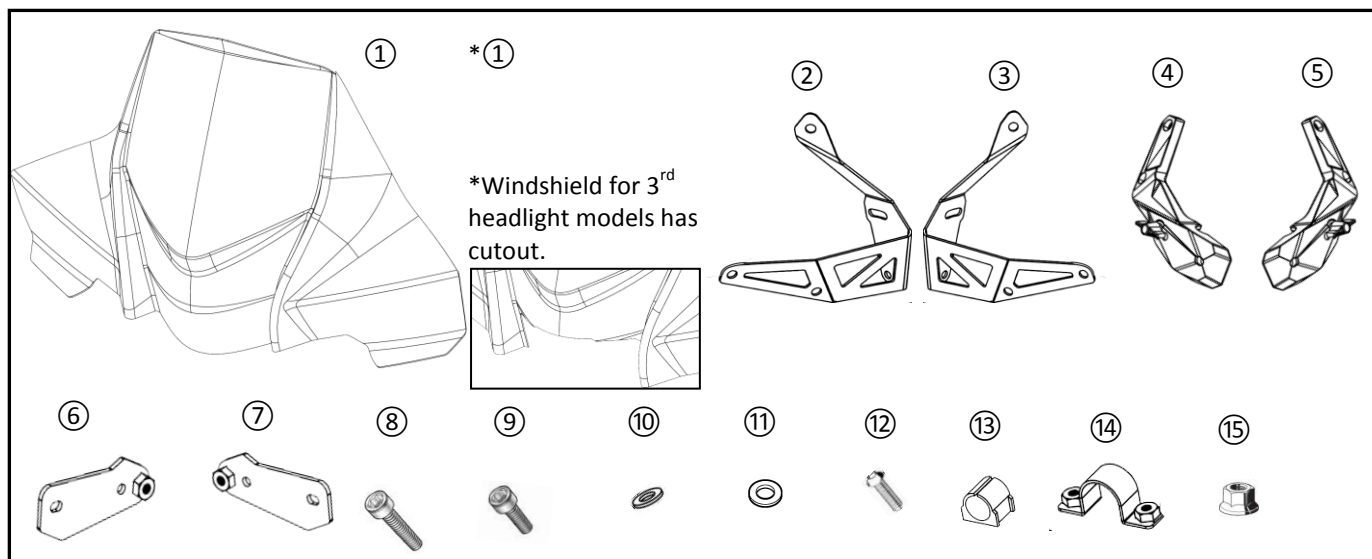
## WARRANTY INFORMATION:

Genuine Yamaha accessories are covered by a 1-year limited warranty against defects in material or workmanship. Labor for replacement of defective components is not covered. See your Yamaha dealer for a copy of the warranty statement.

## DEALER OR INSTALLER:

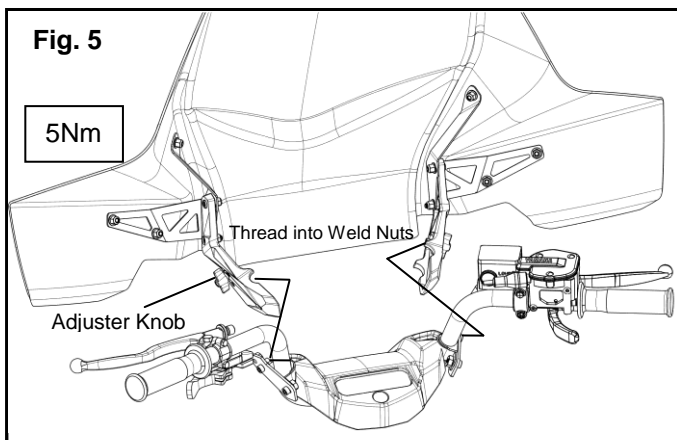
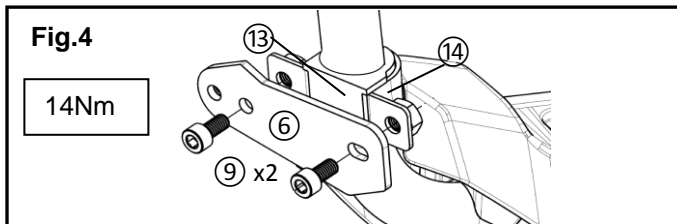
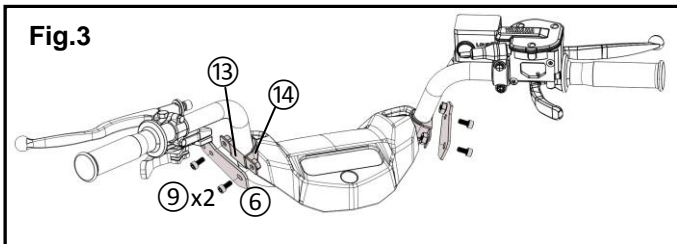
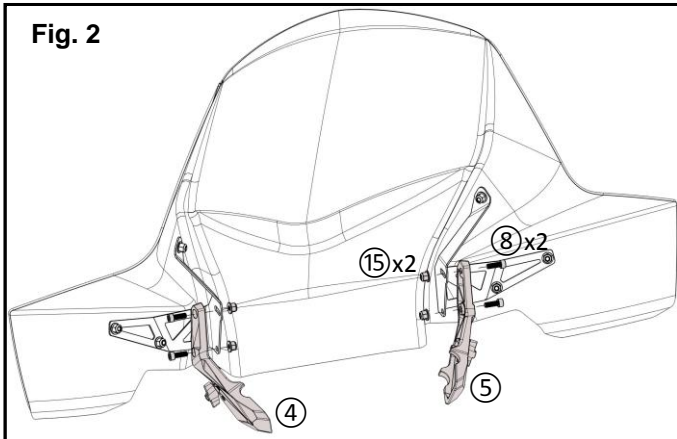
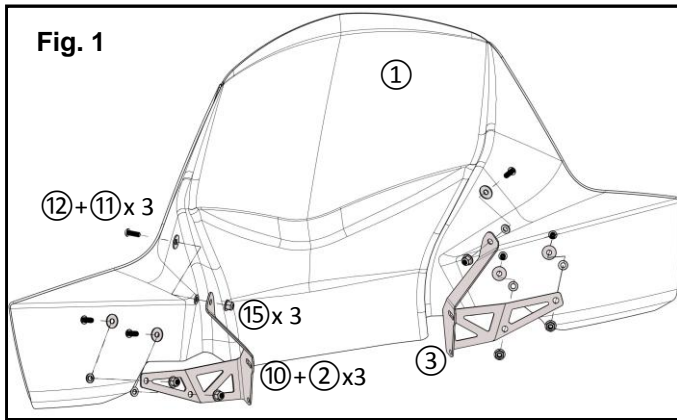
These instructions contain important information for future reference and *must* be given to the customer.

## PARTS LIST:



No.	Part Number	Description	Qty
*	B16-F83J0-V0	Windshield Kit	--
*	2UD-F83J0-V0	Windshield Kit with Cutout for 3 <sup>rd</sup> Headlight	--
①	*	Windshield	1
②	*	Right Side Support	1
③	*	Left Side Support	1
④	*	Left Side Mount Bracket	1
⑤	*	Right Side Mount Bracket	1
⑥	*	Left Side Mount Plate	1
⑦	*	Right Side Mount Plate	1
⑧	*	Long Hex Head Cap Bolt	4
⑨	*	Short Hex Head Cap Bolt	4
⑩	*	Plastic Washer	6
⑪	*	Metal Washer	6
⑫	*	Button Head Hex Bolt	6
⑬	*	Split Rubber Sleeve Insert	2
⑭	*	Weld Nut Strap	2
⑮	*	Flange Nut	10

\* Part supplied with kit only and not available separately.



## PREPARATION:

- Place ATV on a secure level surface and set the parking brake.
- Clean all mounting surfaces before installation.

## INSTALLATION:

1. Thread a Metal Washer (11) onto a Button Head Hex Bolt (12) (Fig. 1)
2. Pass the end of a Button Head Hex Bolt (12) through the mount hole in the Windscreen (1). Place a Plastic Washer (10) on the bolt between the Support and screen. Pass the bolt head through hole in the Left Side Support (2).
3. Thread a Flange Nut (15) on to the Button Head Hex Bolt (12). Hand tighten.
4. Repeat steps 1-3 for the other 5 mount holes for the Left Side Support (2) and Right Side Support (3) brackets as shown in Fig. 1.
5. Pass Long Hex Head Cap Bolts (8) through the Right Side Mount Bracket (5) and through the Right Side Support (2).
6. Thread Flange Nuts (15) on to the Long Hex Head Cap Bolts (8) and hand tighten.
7. Repeat steps 5-6 on the Left Side Mount Support (4) as shown in Fig. 2. Torque all nuts to 5 Nm.
8. Press the Split Rubber Sleeve Insert (13) on to the handlebar above the handlebar cover.
9. Fit the Weld Nut Strap (14) over the Split Rubber Sleeve Insert (13). Slide these two down the handlebar approximately 1/2 way. Do this on the other side of the handlebar as well. See Fig.3.
10. Thread 2 Short Hex Head Cap Bolts (9) through the Left Side Mount Plate (6) and into the Weld Nut Strap (14) and hand tighten. Repeat for the Right Side Mount Plate (5) (Fig.4).
11. Install the Left Side Mount Bracket (4) into the Left Side Mount Plate (6). Thread the end of the adjuster knob bolt into the weld nut on the Side Mount Plate (6). Repeat on the Right Side (Fig.5)
12. With handlebars turned full right lock and full left lock adjust the mount and screen so that it does not interfere with any controls during operation. You may need to loosen the stock cable ties to adjust wires and cables along the handlebar. Tighten the cable ties after you complete the adjustments. Torque clamp bolts to 14Nm.

## MAINTENANCE:

Check and tighten bolts and adjusters as needed.

## CARE AND CLEANING:

Use a clean soft cloth and mild detergent or Yamalube Windshield and Visor cleaner p/n ACC-PLASP-OL-11.

## CUSTOMER SERVICE:

For further information see your Yamaha dealer.

**ESTIMATED TIME TO INSTALL: 0.5 HRS.**